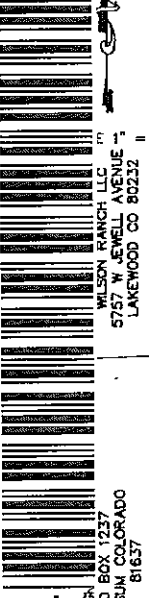
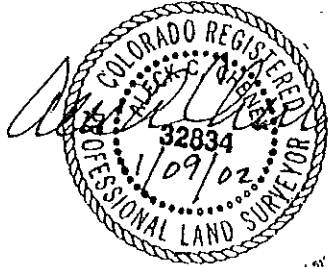


200927075
12/18/2009

EAGLE COUNTY, CO
TEAK J SIMONTON
PG: 1
REC: \$0.00 DOC: \$



INC

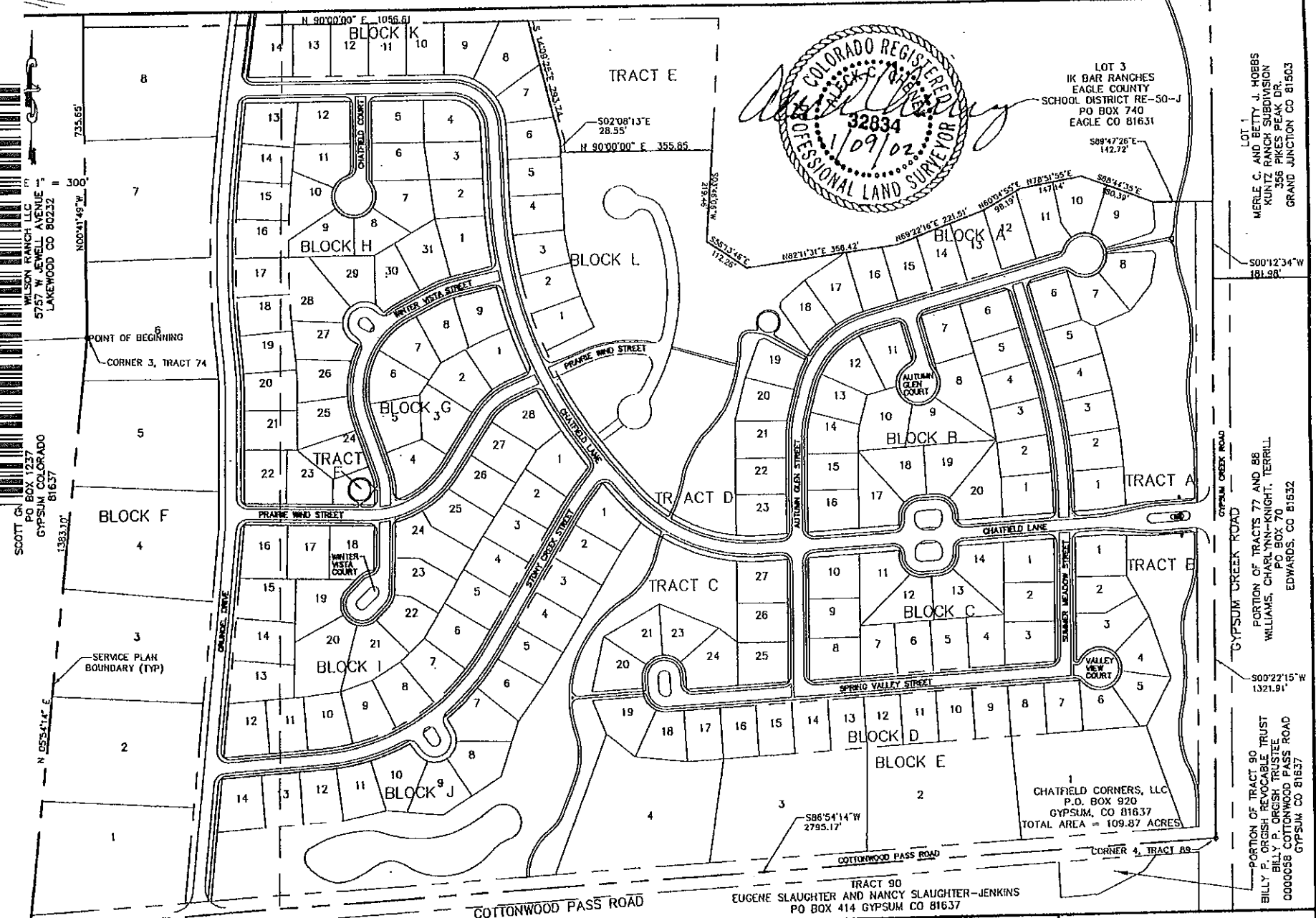


LOT 3
IK BAR RANCHES
EAGLE COUNTY
SCHOOL DISTRICT RE-50-J
PO BOX 740
EAGLE CO 81631

LOT 1
MERLE C. AND BETTY J. HOBBS
KUNTZ RANCH SUBDIVISION
356 PIKES PEAK DR.
GRAND JUNCTION CO 81503

PORTION OF TRACTS 77 AND 86
WILLIAMS, CHARLYNN-KNIGHT, TERRILL
PO BOX 70
EDWARDS, CO 81632

PORTION OF TRACT 90
BILLY P. ORGISH REVOCABLE TRUST
BILLY P. ORGISH TRUSTEE
0000058 COTTONWOOD PASS ROAD
GYPSUM CO 81637



CHATFIELD CORNERS, LLC
P.O. BOX 920
GYPSUM, CO 81637
TOTAL AREA = 109.87 ACRES

TRACT 90
EUGENE SLAUGHTER AND NANCY SLAUGHTER-JENKINS
PO BOX 414 GYPSUM CO 81637

1	SHEET	NO.	DATE	REVISIONS	BY	SERVICE PLAN BOUNDARY CHATFIELD CORNERS TOWN OF GYPSUM EAGLE COUNTY, COLORADO	MARCIN ENGINEERING LLC P.O. BOX 1062 AVON, COLORADO 81620 970-748-0274